

# CHORES



Choose the correct phrases from the box.

istree kay-lee

palung-uh avarlaa

vacuum kay-luh

khareydee kay-lee

ker kaadh-laa

khelnee aavar-lee

bhandee ghaas-lee

kacharaa taak-laa

paan-uh gheyt-lee



\_\_\_\_\_



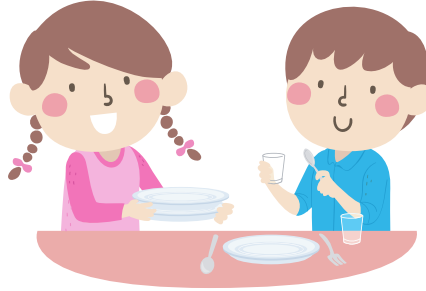
\_\_\_\_\_



\_\_\_\_\_



\_\_\_\_\_



\_\_\_\_\_



\_\_\_\_\_



\_\_\_\_\_



\_\_\_\_\_



\_\_\_\_\_